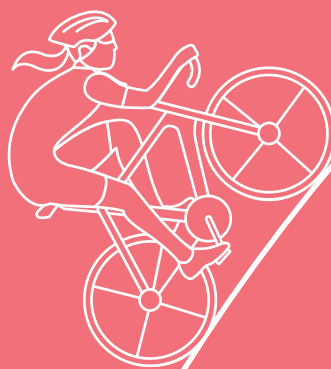
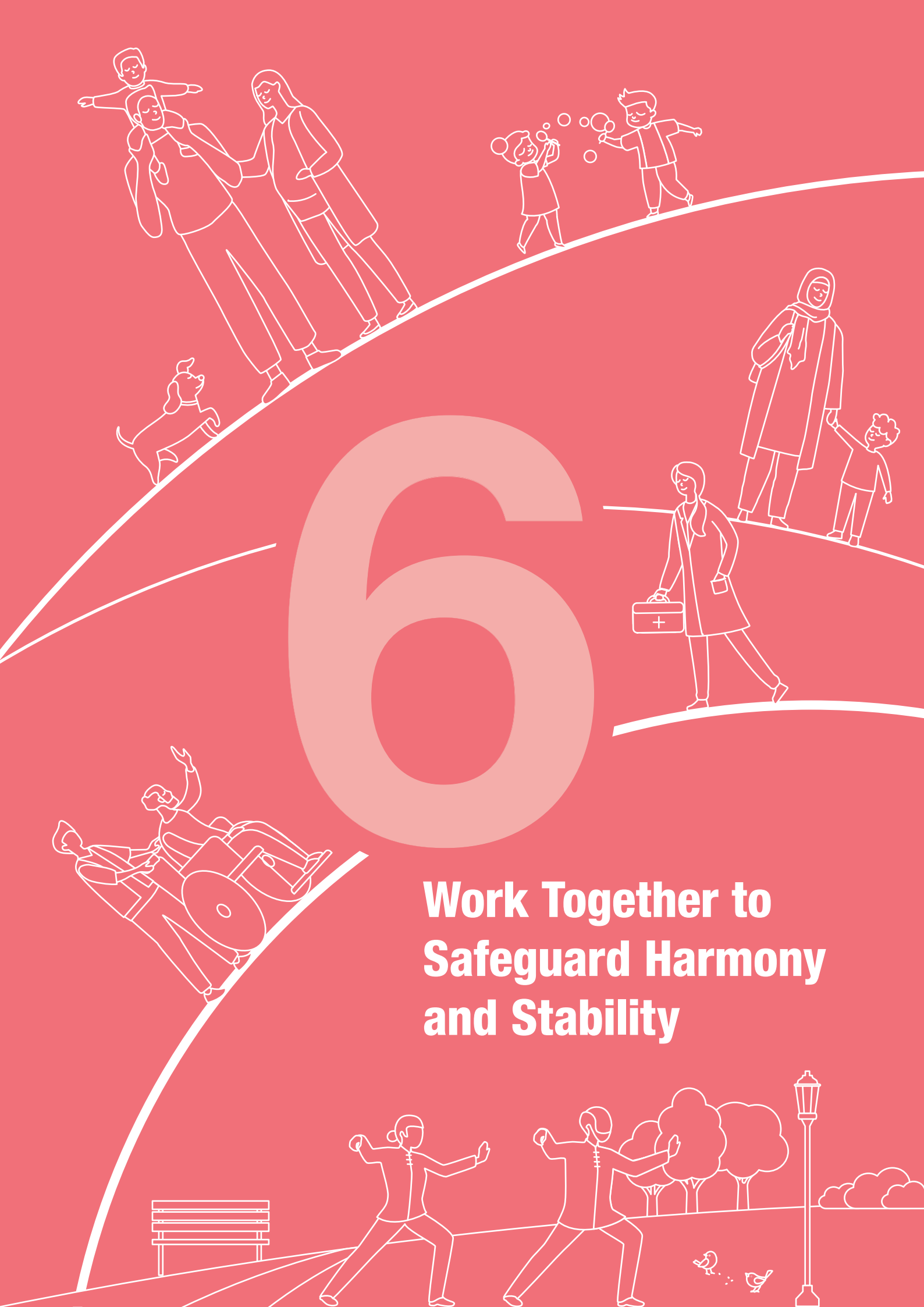


“ **Boost confidence through actions**
Resolve differences with concrete results
Build mutual trust through achievements ”





**Work Together to
Safeguard Harmony
and Stability**



6

Work Together to Safeguard Harmony and Stability

Promoting Fertility and Creating a Pro-childbearing Environment

Supporting families with newborns

- Provide a one-off cash allowance of \$20,000 as financial incentive for newborns for each baby born on or after 25 October 2023 in Hong Kong to a parent who is a Hong Kong permanent resident. The initiative will last for a period of three years, subject to review thereafter. (DCSO and relevant bureaux)
- Starting from the year of assessment 2024/25, raise the deduction ceiling for home loan interest or domestic rents from the current \$100,000 to \$120,000 for taxpayers who will live with his/her first child born on or after 25 October 2023 until the child reaches the age of 18. (FSTB)
- Starting from the next Home Ownership Scheme sale exercise to be launched in 2024, the Hong Kong Housing Authority (HKHA) will introduce the “Families with Newborns Flat Selection Priority Scheme”, which will reserve a quota of flats for balloting and priority flat selection by family applicants with babies born on or after 25 October 2023 until the children reach the age of three. (HB)

- Starting from April 2024, the HKHA will introduce the “Families with Newborns Allocation Priority Scheme” under which family applications with babies born on or after 25 October 2023 will have their waiting time for public rental housing (PRH) reduced by one year. (HB)

Enhancing assisted reproductive services

- Over the five years starting from 2024-25, the Hospital Authority (HA) will gradually increase the assisted reproductive service quota for in-vitro fertilisation treatment from 1 100 to 1 800 treatment cycles per year and enhance the training for related professional personnel. (HHB)
- Starting from the year of assessment 2024/25, provide deduction for expenses on assisted reproductive services under salaries tax and personal assessment, subject to the ceiling of \$100,000 per year. (HHB, FSTB)

Assisting working families in childbearing

- Starting from April 2024, increase the rates of household and child allowances under the Working Family Allowance Scheme by 15% across the board. (LWB)

- Over the next three years starting from 2024, set up 10 more aided standalone child care centres in phases over three years to provide nearly 900 additional places for day child care service; and starting from April 2024, increase the maximum level of Child Care Centre Parent Subsidy to \$1,000 per month. (LWB)
- Starting from the fourth quarter of 2024, double the number of service places under the Neighbourhood Support Child Care Project to about 2 000. (LWB)
- Starting from April 2024, increase the incentive payment at a standard rate of \$25 per hour for home-based child carers of the Neighbourhood Support Child Care Project. For carers of infants and young children aged zero to three or children with special learning needs, the rate will increase to \$60 per hour; for carers of children aged three to nine, the rate will increase to \$40 per hour. (LWB)
- Over the next three years starting from 2024, extend the After School Care Programme for Pre-primary Children to all districts in Hong Kong in phases over three years, with the number of participating centres to be increased from 16 to 28 and the number of service places from about 670 to nearly 1 200. (LWB)
- In the 2024/25 school year, launch a school-based after school care service in designated primary schools for one year. (LWB)
- Launch the Good Employer Charter 2024 to promote employers' adoption of good human resource management measures and implementation of family-friendly employment practices, so that the employed are able to fulfil both their work and family responsibilities. (LWB)

Promoting family education

- In the latter half of 2024, launch a new five-year Funding Scheme on the Promotion of Family Education with an annual provision of \$8 million to subsidise non-profit-making community projects in promoting family education. (HYAB)

Caring for the Elderly

Elderly services

- The eligibility of the Residential Care Services Scheme in Guangdong was relaxed earlier to allow Hong Kong private organisations with experience and a good track record in providing subsidised residential care services for the elderly to join. Explore further extension of the Scheme within 2024 to specific residential care homes for the elderly (RCHEs) operated by Mainland organisations, so that elderly persons retiring in the Mainland cities of the Guangdong-Hong Kong-Macao Greater Bay Area (GBA) will have more choices. (LWB)
- Explore the provision of subsidy to elderly Comprehensive Social Security Assistance (CSSA) recipients who opt to stay in RCHEs under the Residential Care Services Scheme in Guangdong. (LWB)
- Starting from the second quarter of 2024, extend the coverage of the Residential Care Service Voucher for the Elderly from care-and-attention places, which are currently covered by the scheme, to nursing home places, and provide 1 000 more vouchers, so that more eligible elderly persons can be admitted to participating RCHEs without waiting. (LWB)
- Relaxed the absence limit under the pre-application one-year continuous residence requirement of the Social Security Allowance Scheme from 56 days to 90 days starting from September 2023 to facilitate applicants' longer period of absence from Hong Kong. (LWB)

Age-friendly home

- Inject an additional \$1 billion into the Innovation and Technology Fund for Application in Elderly and Rehabilitation Care to continue subsidising eligible elderly and rehabilitation service units to procure, rent and trial technology products, such as ultra-low beds for medical and nursing care and intelligent anti-wandering systems, with a view to improving the quality of life of elderly persons and persons with disabilities, and reducing the pressure of carers. (LWB)
- Inject \$80 million into the Elder Academy Development Foundation to encourage the elderly to pursue lifelong learning and promote active ageing in conjunction with community donations and support. (LWB)
- The Deputy Financial Secretary will co-ordinate bureaux including the Development Bureau, the Labour and Welfare Bureau, the Housing Bureau, etc. to put forward pragmatic proposals for incorporating the concept of universal design and accessibility into the building design manual of the Buildings Department. (DFSO and relevant bureaux)

Enhancing the quality and manpower of residential care homes

- Around 1 000 quotas were approved in the first round of application under the Special Scheme to Import Care Workers for Residential Care Homes, in order to increase the supply of frontline staff, improve care for residents and reduce staff stress at work. (LWB)
- Complete the Review of Manpower for Healthcare Services in Residential Care Homes within 2024, with a view to establishing professional standards and a career progression path, and attracting more new blood to the sector. (LWB)

- Implement relevant measures under the Residential Care Homes Legislation (Miscellaneous Amendments) Ordinance 2023 in phases to enhance the quality of residential care homes in various aspects. (LWB)
- Continue to increase subsidised residential care service places for the elderly. (LWB)

Silver economy

- Establish an Advisory Panel on Silver Economy comprising experts to conduct research and provide recommendations on how to develop silver economy. The Hong Kong Trade Development Council will also incorporate silver economy elements into more exhibitions to enhance the promotion of relevant products and services. (CEDB)

Caring and Inclusive Community

Supporting persons with disabilities

- Increase the number of representatives of persons with disabilities and carers in the Rehabilitation Advisory Committee starting from 2024 to better gauge their needs. (LWB)
- Increase nursing staff in residential care homes for persons with disabilities (RCHDs) in 2024 to enhance the care for their ageing residents. (LWB)
- Gradually increase service places of the Extended Care Programme in Day Activity Centres and the Work Extension Programme starting from 2024, with a view to enhancing the care for persons with disabilities using day training services who are ageing or with deteriorating health conditions. (LWB)
- Seek funding from the Community Care Fund (CCF) to launch a three-year pilot scheme to provide an additional monthly subsidy of \$500 to working disabled recipients of CSSA so as to encourage employment. (LWB)

- Introduce an incentive scheme by end-2023 to encourage developers to build and operate private RCHDs in private development projects. (LWB, DEVB)

Catering for students with special educational needs

- Enhance the existing staff provision of resource teachers for primary and secondary sections of aided special schools and extend it to schools for social development starting from the 2024/25 school year to facilitate special schools to provide students comorbid with Autism Spectrum Disorder with additional support in learning and development. (EDB)
- Continue to implement the Strength-based Programme under the Project on Whole School Approach to Providing Tiered Support for Students with Autism Spectrum Disorder and introduce new programmes and themes to help such students unleash their potential and strengthen life planning. (EDB)

Underpinning carers of elderly persons and persons with disabilities

- Starting from the first quarter of 2024 and piloting in Tsuen Wan and Southern Districts, engage the District Service and Care Teams (Care Teams) to help identify singleton and doubleton elderly households, carers of elderly persons and carers of persons with disabilities requiring support through visits or contacts, and to refer cases requiring assistance to the relevant social welfare service units for follow-up. (LWB)
- Assist households referred by the Care Teams to install emergency alarm systems as necessary. (LWB)

- Request RCHEs under the Enhanced Bought Place Scheme, RCHDs under the Bought Place Scheme for Private RCHDs and service units participating in the Community Care Service Voucher Scheme for the Elderly to provide residential or day respite services when there are vacant residential care places or service places, and match carers in need with respite services through the designated hotline for carer support. (LWB)
- Set up additional Parents/Relatives Resource Centres and enhance peer support services to support persons in mental recovery as well as their families and carers. (LWB)
- Continue to implement the three-year territory-wide “Care the Carers Campaign” to encourage people from all walks of life to show their empathy, support and care for carers. (LWB)
- Set up designated teams in the second quarter of 2024 to proactively contact carers of special school leavers six months before graduation to provide training on caring and interaction skills, and arrange post-school care plans and link up with community support services. (LWB, EDB)
- Expand the scope of the Innovation and Technology Fund for Application in Elderly and Rehabilitation Care to enable eligible elderly and rehabilitation service units to procure suitable technology products for lending to elderly persons, persons with disabilities and their carers for use at home. This will expand the application of technology products from residential care homes and community service units to households. (LWB)

Protecting children

- Fully co-operate with the Legislative Council (LegCo) in the scrutiny of the Mandatory Reporting of Child Abuse Bill, make preparations for coping with the possible upsurge in the number of reported child abuse cases after the legislation comes into effect, and strengthen professional support for child abuse victims and their families. (LWB)
- Progressively follow up on the recommendations of the Review of Residential Child Care and Related Services, including increasing the number of residential child care service places, and strengthening the support and training for foster families. (LWB)
- Continue to implement the Social Work Service for Pre-primary Institutions regularised since the 2022/23 school year, providing service to more than 700 participating pre-primary institutions and covering around 130 000 pre-primary children and their families. (LWB)
- Starting from April 2024, increase the incentive payment for foster families to encourage more enthusiastic persons to participate as foster families; and provide additional support to foster families caring for children with special learning or care needs, including arranging foster children suspected to have special needs to receive early assessment and appropriate professional rehabilitation therapy or training.

Facilitating development of welfare services organisations

- Set up a dedicated fund of \$500 million to subsidise non-governmental organisations (NGOs) operating subvented welfare services in conducting staff training and system enhancement, etc. (LWB)

Targeted poverty alleviation

- The Commission on Poverty has examined the latest statistical data from various perspectives including household characteristics, employment and income conditions, cash benefits and living environment, etc. and has identified target groups for targeted poverty alleviation, including households residing in subdivided units (SDUs), single-parent households and elderly households. (CSO, LWB)
- Increase the number of student participants under the Second Cohort of the Strive and Rise Programme launched in October 2023 to 4 000. An Alumni Club will be established for student participants who have completed the Programme. (CSO, LWB)
- Launch the first project of the Pilot Programme on Community Living Room by end-2023 through tripartite collaboration of the Government, the business sector and the community to provide SDU households with additional living space. (CSO, LWB)
- Launch the School-based After School Care Service Scheme in the 2023/24 school year to allow primary students in need to stay in school after class to receive care and learning support. The Scheme will be reviewed after one year of piloting in about 50 primary schools in districts with a relatively larger number of target students. (CSO, LWB, EDB)

Community building

- Fully mobilise all 452 Care Teams in 18 districts and, taking into account the operation of Care Teams, make good use of information technology (IT) to develop management applications to facilitate their daily work. (HYAB)

- Invite each of the District Youth Community Building Committees across 18 districts to propose a distinctive photo-taking landmark. With particular themes and design elements, these landmarks will showcase district uniqueness for attracting citizens and tourists to “check in” and take photos there. (HYAB)

Women development

- Set up a dedicated Women Affairs Team under the Home and Youth Affairs Bureau and designate the post of Commissioner for Women Affairs to focus on work related to women affairs. (HYAB)
- Organise the first Family and Women Development Summit in 2024 to collect public views for formulating more focused measures to support women’s development and promote family education. (HYAB)
- Launch a one-stop family and women information portal to pool together information on family education, marriage and women’s health, etc. and share legal information relating to family and women affairs. (HYAB)
- Continue to encourage women’s groups and NGOs to make good use of the Women Empowerment Fund to facilitate women’s development of their own potential and self-enhancement. In addition, the Greater Bay Area Exchange Programme under the Fund will be regularised in 2024-25 and a new dedicated scheme will be introduced to encourage women to participate in community services. (HYAB)
- Launch, through CCF, a maintenance mediation pilot scheme to subsidise NGOs in providing mediation services on maintenance so as to resolve related disputes. (HYAB)

Promoting hometown culture

- In the first quarter of 2024, launch the Clansmen Culture Promotion Scheme to provide funding support for clansmen associations to organise activities that promote hometown culture and facilitate cultural exchange, thereby promoting the spirit of loving the Motherland, Hong Kong and the hometown. (HYAB)

Ethnic minorities

- Support the Steering Committee on Ethnic Minority Affairs, chaired by the Chief Secretary for Administration, to strengthen cross-bureau/inter-departmental collaboration, as well as to co-ordinate and provide steer on support measures for ethnic minorities (EMs). (CMAB)
- Set up two new support service centres for EMs in Kowloon Central and New Territories East by end-2024. (HYAB)
- Establish an EM Care Team in each of the support service centres for EMs starting from mid-2024. (HYAB)
- Regularise the support services for EM new arrivals and youths as well as the District-based Programmes for Racial Harmony. (HYAB)
- Invite sponsored organisations under the first round of “Funding Scheme for Youth Adventure Training Activities” to reserve a certain quota for the participation of EM youths. (HYAB)
- Implement the regularised Racial Diversity Employment Programme and launch enhancement measures, including stepping up outreaching services and facilitating EMs to acquire vocational language, etc. (LWB)
- Extend the “Ethnic Minority District Ambassador” pilot scheme for three years to continue engaging EMs or designated persons to support EMs in the welfare service units of NGOs and the Social Welfare Department. (LWB)

- Encourage departments to design their own language tests according to the job requirements of individual civil service grades to provide an additional way for applicants to meet the appointment requirements in respect of language proficiency. (CSB)
- Strengthen dissemination of government recruitment information to non-ethnic Chinese so that they could receive such information in a more direct and efficient manner. (CSB)
- Provide basic workplace Chinese training for interns of the internship programme for EM students based on the experience of the introduction of such training in 2023, with a view to enhancing their understanding on the application of Chinese and the required level of Chinese proficiency in daily work. The internship programme was launched in 2019 and about 140 EM post-secondary students have participated in the programme so far. (CSB)
- Design more diversified learning materials under the Online Chinese Language Self-learning Resources for non-Chinese speaking (NCS) students, and organise after-school Chinese language courses for lower primary NCS students using adapted learning materials of the Youth Chinese Test. (EDB)
- Increase the number of schools that provide school-based life planning education support services for NCS students. (EDB)
- Expand the Summer Bridging Programme to include NCS students progressing to Primary 5 and Primary 6 starting from the 2023/24 school year. (EDB)
- Collaborate with NGOs to set up a service centre on a trial basis to provide emotional support and counselling for EMs. (HHB)
- Co-ordinate the representations, in EM languages, of policies on and services for EMs by government bureaux and departments on their webpages. (CMAB)

- Through the Equal Opportunities Commission (EOC), provide refresher training from time to time to help public authorities understand more precisely the content and requirements of the Administrative Guidelines on Promotion of Racial Equality, and organise more public education and publicity activities on equal opportunities and social inclusion. (CMAB)

Eliminating discrimination

- Continue to work with the EOC to study how the protection under the anti-discrimination ordinances could be enhanced to tackle discrimination that may be encountered by persons arriving in Hong Kong from the Mainland. (CMAB)
- Support the EOC to enhance publicity and promotion of anti-sexual harassment, raise public awareness and response capabilities, and further explore enhancing the relevant legal protection. (CMAB)

Labour Support

Labour protection and manpower upgrading

- Increase the maximum monthly retraining allowance from \$5,800 to \$8,000 in the first quarter of 2024 to encourage more people to attend training and enter the workforce. (LWB)
- Roll out a two-year pilot scheme by the Employees Retraining Board (ERB) in the first quarter of 2024 to provide pre-employment training for trades facing severe manpower shortage. Trainees will receive allowance during training and be offered immediate employment upon completion of training. (LWB)
- The ERB to undertake a comprehensive review and submit recommendations in the third quarter of 2024 on its service scope and training strategies so as to promote continuous learning and upskilling for all. (LWB)

- Upon reaching a consensus in the Labour Advisory Board on the review of the “continuous contract” requirement, amend the Employment Ordinance as soon as possible to enable more employees to enjoy comprehensive employment benefits. (LWB)
- Launch a three-year Re-employment Allowance Pilot Scheme to encourage the elderly and middle-aged persons who have not been at work for pay for three consecutive months or more to enter the labour market, so as to unleash the potential labour force. (LWB)
- Implement the Enhanced Supplementary Labour Scheme to allow employers, on the premise of ensuring employment priority for local workers, to import workers for alleviating labour shortage. (LWB)
- Follow up on the report on enhancing the Statutory Minimum Wage review mechanism submitted to the Government by the Minimum Wage Commission in October 2023 and decide on the way forward within six months. (LWB)
- Taking account of the abolition of offsetting arrangement under the Mandatory Provident Fund (MPF) System, review the coverage of ex-gratia payment of severance payment under the Protection of Wages on Insolvency Fund to enhance the protection for employees. (LWB)
- Undertake preparatory work for the abolition of offsetting arrangement under the MPF System, including the 25-year Government Subsidy Scheme, and continue to publicise the relevant requirements. (LWB)

Occupational safety and health

- Enhance the safety of truss-out bamboo scaffolding works through refining the relevant code of practice, strengthening safety training as well as enhancing inspection and enforcement. (LWB)

- Explore the widening of coverage of the Pilot Rehabilitation Programme for Employees Injured at Work to help more injured employees recover and return to work early. (LWB)

Review on the remuneration of non-skilled workers under government outsourced service contracts

- Implement a series of improvement measures based on the findings of the completed review on the remuneration of non-skilled workers under government outsourced service contracts and the relevant monitoring mechanism. (FSTB)

Healthy Hong Kong

Developing into a health and medical innovation hub

- Set up a preparatory office under the Department of Health (DH) within 2024 to study the potential restructuring and strengthening of the current regulatory and approval regime for medicine, medical device and technology; and put forward proposals and steps for the establishment of the Hong Kong Centre for Medical Products Regulation (CMPR) which will be a step towards the transition to the “primary evaluation” approach in approving applications for registration of pharmaceutical products containing new chemical or biological entities (NCEs) and medical devices. (HHB)
- To pursue Hong Kong, China’s accession to the International Council for Harmonisation of Technical Requirements for Pharmaceuticals for Human Use as an observer to familiarise with and promote the latest development of drug regulation, and to pave the way for the Hong Kong CMPR to become an internationally recognised regulatory authority for drugs and medical devices. (HHB)

- Set up the GBA International Clinical Trial Institute in the Hetao Shenzhen-Hong Kong Science and Technology Innovation Co-operation Zone to provide a one-stop clinical trial support platform for medical research institutions; co-ordinate clinical trial resources in the public and private healthcare sectors in Hong Kong; and work with the Shenzhen Park to co-ordinate clinical trial development and promote co-operation with the clinical trial networks in the Mainland, in particular the GBA. (HHB)
- Establish the “Cluster Clinical Research Support Offices” in the HA in 2024-25 to provide advisory and support services for frontline staff, introduce additional measures to encourage medical teams to conduct clinical researches and trials, expedite the process of ethics review of clinical research, and strengthen the systems and mechanisms for supporting clinical research and data sharing, with the aim of facilitating clinical research and trials. (HHB)
- Enhance the existing drug regulatory regime by establishing the new “1+” mechanism to allow pharmaceutical products containing NCEs for life-threatening or severely-debilitating diseases with local clinical data to conditionally register with only one certificate of pharmaceutical product (instead of two under the prevailing arrangement) issued by reference drug regulatory authorities (e.g. the National Medical Products Administration) so as to facilitate the development of clinical trials and the use of new drugs in Hong Kong. (HHB)

Promoting primary healthcare development

- Launch a three-year Chronic Disease Co-Care Pilot Scheme starting from November 2023 to provide subsidised hypertension and diabetes mellitus screening and management service for persons aged 45 or above. (HHB)

- Based on the recommendations made in the Primary Healthcare Blueprint, establish the Primary Healthcare Commission (formerly referred to as Primary Healthcare Authority) within 2024. (HHB)

Strengthening capacity to combat communicable diseases

- For better preparation of emerging communicable diseases, the Government will make good use of the donation from the Hong Kong Jockey Club for supporting local projects to enhance local capacity in surveillance, early warning and prevention and control through system construction, optimisation of infection control measures, etc. and strengthen the joint disease prevention and control work with the Mainland authorities. The donation also includes the promotion of international co-operation in scientific research on areas such as vaccines through local university, and bringing top-notch vaccine technologies and talents to Hong Kong. (HHB)

Digital healthcare record

- Roll out the five-year plan of “eHealth+” to develop a comprehensive healthcare information infrastructure that integrates multiple functions of data sharing, service support and care journey management, under the patient-centric principle and four strategic directions, namely, “One Digital Health Record”, “One Care Journey”, “One Front-door to Empowering Tools” and “One Health Data Repository”, with a view to better supporting different healthcare policies including primary healthcare and cross boundary medical collaborations in the GBA. (HHB)

Enhancing public healthcare services

- Reduce the waiting time of stable new cases for two specialties, namely Ear, Nose and Throat, and Orthopaedics and Traumatology by 10% in 2024-25. (HHB)

- Prepare for the setting up of a chest pain centre in Queen Mary Hospital in accordance with national accreditation standards in 2025, with a view to improving the consultation process, treatment outcome and survival rate of patients. (HHB)
- Prepare for the establishment of a breastmilk bank and the related mechanism for breastmilk donation in 2025 to provide breastmilk for infants and young children who cannot be breastfed by their biological mothers, and especially, to minimise the chance of serious illness in premature or severely-ill babies. (HHB)
- Continue to optimise drug dispensing and collection mechanisms in public hospitals through education, publicity and rationalisation efforts to ensure safe use and non-excessive storage of drugs by patients. (HHB)
- Capitalise on the district networks and service experience of Care Teams by providing their members with relevant mental health support training to assist in early referral of persons in need in the local communities for support. (HHB)
- Enhance the services of Integrated Community Centres for Mental Wellness and scale up training for social workers in community mental health service units to strengthen early identification and intervention to assist persons with mental health needs, and raise the capacity of such social workers in handling complicated cases. (LWB)
- Launch “Mental Health Literacy” resource packages suitable for upper primary and junior secondary levels in the 2023/24 school year, and will develop those for lower primary and senior secondary levels, with a view to proactively enhancing students’ awareness and assisting schools in promoting mental health. (EDB)

Oral health

- Launch a Primary Dental Co-Care Pilot Scheme for Adolescents to promote preventive dental care among the adolescents. (HHB)
- Collaborate with NGOs to enhance emergency and special care dental services for the underprivileged and those with special needs and disabilities. (HHB)
- Enhance the Elderly Dental Assistance Programme under the CCF. (HHB)

Mental health

- Optimise the ratio of case manager to patients with severe mental illness to no higher than 1:40 under the Case Management Programme, and maintain the median waiting time for new cases triaged as Priority 1 (urgent) and Priority 2 (semi-urgent) at psychiatric specialist outpatient clinics at no longer than one week and four weeks respectively. (HHB)
- Launch a pilot scheme in three District Health Centres in 2024 to provide mental health assessment for those in need, with the aim of following up on and referring high-risk cases promptly. (HHB)

Healthcare manpower supply and training

- Introduce an amendment bill to the Dentists Registration Ordinance to reform the regulatory framework for dentists and ancillary dental workers, and enable implementation of the future requirement on internship (for local dental graduates) or assessment period (for non-locally trained dentists who have passed the Licensing Examination) for obtaining full registration in Hong Kong. (HHB)
- Keep pressing ahead with the legislative amendment to the Nurses Registration Ordinance to provide new pathways for admitting qualified non-locally trained nurses to serve in specified institutions, with the view of alleviating the shortage of local nurses. (HHB)

- Explore amending the Supplementary Medical Professions Ordinance to provide new pathways for the admission of qualified non-locally trained supplementary medical professionals to serve in the HA and the DH, with the aim of meeting the increasing demand for public healthcare services. (HHB)
- Starting from the 2023/24 academic year, gradually increase training places of ancillary dental workers and provide tuition fee subsidies to attract more new entrants to the industry, thereby meeting development needs of the oral healthcare and dental care sectors in Hong Kong. (HHB)
- Building upon the collaboration experience with the Guangdong Province under the HA's Healthcare Talents Visiting Programme, take forward the exchange of clinical healthcare professionals between Hong Kong and other Mainland regions/cities (such as Shanghai). (HHB)
- For the first Chinese Medicine Hospital (CMH) to be set up in Hong Kong, facilitate its establishment of strategic partnerships with Mainland CMHs, take forward preparatory work for its commissioning and support its sustainable development. (HHB)
- In 2023-24, launch short-term training programmes related to the scheme on Training of Advanced Clinical Talents in Chinese Medicine in Hong Kong, which is supported by the National Administration of Traditional Chinese Medicine, as well as the HA's "Greater Bay Area Advanced Chinese Medicine Clinical Training Programme", etc. (HHB)

Cross-boundary medical collaboration

Chinese medicine development

- Complete the development of a digitalised Chinese medicines (CM) drug information platform in early 2024 for access by the public, industry and international research institutions for CM drug identification and education purposes. (HHB)
- Work with the CM sector for formulating a comprehensive Chinese Medicine Development Blueprint to outline the long-term directions and strategies for CM development, which is expected to be published in 2025. (HHB)
- Starting from 2023-24, include CM rehabilitation in the clinical framework of stroke care, launch a brand new pilot project on cancer care in day chemotherapy centers, and explore extending integrated Chinese-Western medicine services to more diseases, such as elderly degenerative diseases. (HHB)
- Resume the HA's hospital accreditation programme to ensure that its management and services are on par with international standards, and support the Shenzhen Hospital Accreditation Research Centre to set up an office in Hong Kong in the future. (HHB)
- In 2024, launch the "Elderly Health Care Voucher Greater Bay Area Pilot Scheme" to extend the coverage of the elderly healthcare vouchers initially to about five qualified medical institutions in the GBA cities as trial service points for provision of primary healthcare services. It will also cover individual designated medical institutions providing dental services at places near Hong Kong, e.g. Shenzhen. (HHB)
- Make optimal use of the healthcare services in the GBA, and strategically procure healthcare services for Hong Kong citizens from suitable healthcare institutions (including the University of Hong Kong-Shenzhen Hospital) so as to alleviate the pressure on our public hospital services and shorten the waiting time. (HHB)

- Continue to explore with the Mainland the establishment of a standing organ transplant mutual assistance mechanism, with a view to facilitating cross-boundary organ transplant matching when local matching cannot identify suitable patients for the organs donated in either of the two places, in order to give awaiting patients additional chances of receiving organ transplant. (HHB)

Enhancing public health and education

- Continue to promote inter-departmental and cross-sector collaboration; co-operate with the community and the public; and make good use of IT to jointly build a health-enhancing conducive environment. In particular, we will focus on improving citizens' post-epidemic lifestyle, including reducing tobacco use, healthy eating and exercising. (HHB)
- Enhance smoking cessation services and tobacco hazard education by, inter alia, phasing in the provision of smoking cessation medication at service points such as District Health Centres from 2024 onwards and, based on the case management model, offering counselling services to smokers. (HHB)
- Continue to provide comprehensive and continuous disease prevention care to citizens via inter-departmental and cross-sector collaboration. Publish the "Hong Kong Reference Framework for Life Course Preventive Care in Primary Healthcare" and continue to step up efforts in promoting health messages, in particular to strengthen students' understanding and practicing of healthy eating and regular exercise. (HHB)
- Continue to actively promote breastfeeding friendly measures, with the DH progressively commencing the accreditation process for the 13 Maternal and Child Health Centres that have not yet been accredited as Baby-Friendly Health Facilities. (HHB)

Hospital development

- Enhance the capacity of the HA capital project team and strengthen its manpower to better deliver the two hospital development plans and tackle the challenges in planning for and implementing the plans. (HHB)

A Liveable and Vibrant City

Sports development

- Enhance the staffing arrangements and professional standards of the Sports Medicine Centre of the Hong Kong Sports Institute to provide more comprehensive sports medicine support for elite athletes. (CSTB)
- Collaborate with the Sports Federation & Olympic Committee of Hong Kong, China (SF&OC) to launch a pilot scheme in mid-2024 to offer more professional training and internship opportunities to sports coaches. (CSTB)
- Collaborate with SF&OC to include Festival of Sport events on "Sport For All Day" which will take place at government venues, shopping centres and private venues to promote "Sports for All". (CSTB)
- Launch a pilot scheme in 2023-24 to establish self-test fitness corners in eight sports centres of the Leisure and Cultural Services Department (LCSD) to allow citizens to take simple physical fitness tests and monitor their physical fitness levels at any time, and extend the scheme to all 18 districts in Hong Kong within 2024. (CSTB)
- Launch a pilot scheme within 2024 to introduce smart fitness equipment in four outdoor recreation venues of LCSD, allowing users to download applications, store data of their physical activities and access information on sports and health, so as to facilitate personal health management, physical fitness monitoring and enhancing the fun of exercise. (CSTB)

- Promote family-based sports activities and organise more training programmes/fun days on popular sports in order to encourage the public to regularly participate in sports and physical activities. (CSTB)
- Explore opening up sports facilities for free on specific festive dates each year and organising thematic sports days for public participation. (CSTB)
- Plan for a swimming pool capable of hosting international competitions as well as an arena with fencing training and competition facilities to further promote swimming and fencing and raise their standards. (CSTB)

Environmental protection and ecological conservation

- Prepare to establish the Sam Po Shue Wetland Conservation Park, with a view to conserving natural habitats, expanding environmental capacity in the Northern Metropolis, fostering local aquaculture development, enhancing eco-education and providing recreation. (EEB)
- Aptly update the Hong Kong Biodiversity Strategy and Action Plan, in light of the latest targets of the Conference of the Parties to the Convention on Biological Diversity, experience of other places and the actual circumstances in Hong Kong. (EEB)
- Further promote countryside revitalisation by extending ecological conservation efforts in Sha Lo Tung, as well as enhancing the eco-tourism experience in Mui Tsz Lam Tsuen, Sha Tau Kok and improving its local infrastructure. (EEB)
- Review the relevant laws and regulations on nature conservation and further enhance public education for better protection of wild animals, in particular marine life. (EEB)
- Amend the Wild Animals Protection Ordinance to not only regulate the feeding of feral pigeons but also increase the maximum penalty and introduce fixed penalty for illegal feeding of wild animals. (EEB)
- Designate the Robin's Nest Country Park within 2024 for nature conservation and public enjoyment, as well as formation of an ecological corridor with Shenzhen Wutong Mountain Scenic Area, thereby promoting ecological integration between Shenzhen and Hong Kong. (EEB)
- Designate the North Lantau Marine Park within 2024 to strengthen conservation of marine life and habitats. (EEB)
- Commence a technical feasibility study for the set up of a supersite for GBA air quality laboratory and meteorology monitoring in Tsim Bei Tsui of Hong Kong to provide regional air pollution and meteorological monitoring and forecasting services. (EEB)
- Plan to establish the Meteorological Training Centre for Belt and Road (B&R) Countries to strengthen co-operation on the provision of training for the meteorological personnel of B&R countries. (EEB)
- Set up a new network of earthquake intensity meters over the territory in collaboration with the Guangdong Earthquake Agency to strengthen locally felt earth tremor information service and contribute to the enhancement of earthquake monitoring for the GBA. (EEB)

Conservation of heritage buildings

- Deepen collaboration and exchange between Hong Kong and the Mainland, in particular within the GBA, on archaeology, conservation and revitalisation of historic buildings, as well as relevant promotion, public education and community engagement efforts. (DEVB)

Striving towards carbon neutrality

- Consult the trade by end-2023 on the proposal of amending the Buildings Energy Efficiency Ordinance, including extending the scope of regulation to more types of buildings, mandating the disclosure of information related to energy audit reports and shortening the interval of energy audit, with the target of finalising the proposed amendments and commencing the legislative work within 2024. (EEB)

- Extend the carbon audit practice for government buildings to government infrastructure progressively. (EEB)
- Formulate the Strategy of Hydrogen Development in Hong Kong in the first half of 2024 so as to plan for the development of local applications of hydrogen energy. (EEB)
- Commence preparatory work for amending the legislation relating to the manufacture, storage and use of hydrogen within 2024, with a view to introducing the draft amendments into the LegCo in 2025. (EEB)
- Introduce a bill into the LegCo within 2024 to establish a common legislative framework applicable to producer responsibility schemes (PRs) on different products, and make relevant subsidiary legislation to gradually implement the PRs on five types of products starting from 2025, including plastic beverage containers, beverage cartons, electric vehicle batteries, vehicle tyres and lead-acid batteries. (EEB)
- Expand further the community recycling network GREEN@COMMUNITY in end-2023 by developing a network of Recycling Stores in 50 PRH estates to complement the implementation of municipal solid waste charging on 1 April 2024. (EEB)
- Introduce a bill into the LegCo in early 2024 to regulate the proper handling of recyclables in residential buildings. (EEB)
- Install smart recycling bins for collecting food waste in all PRH estates progressively from end-2023 to further encourage domestic food waste recycling. (EEB)
- Implement the first phase of regulation of disposable plastic tableware and other plastic products in the second quarter of 2024. (EEB)
- Identify a suitable site in the Northern Metropolis for development of an advanced waste-to-energy facility to provide essential waste disposal services for the local population in the long run. (EEB)
- Continue to implement the \$400 million Green Tech Fund to support research and development projects on decarbonisation technologies with good application and commercialisation potential. (EEB)
- Develop a large-scale floating solar system at Plover Cove Reservoir, which is expected to supply 6 million kilowatt-hour of electricity per annum upon its completion in 2026 for direct use by the nearby waterworks facilities. (EEB)

Enhancing district environment

- Following the implementation of raising the fixed penalty level for offences relating to environmental hygiene and shopfront extension, conduct public consultation on the second stage of legislative amendments for enhancing the efficiency and deterrent effect of enforcement. (DCSO, EEB)
- Continue to mobilise various sectors of the community on rodent control and adopt a multi-pronged approach, including strengthening overnight operations, applying new technologies and tools, and formulating a new rodent infestation index. (DCSO, EEB)
- Develop clean public markets by improving the hygiene of these markets and cooked food centres, through, inter alia, enhancing cleansing services and stepping up enforcement against irregularities such as shopfront extension. (DCSO, EEB)
- Improve rural environmental hygiene by putting in place progressively fully-enclosed refuse collection facilities with new design at about 400 rural locations in the next three years following installation of such facilities at over 100 locations in 2022. (EEB)
- Expedite public toilet refurbishment projects under the Food and Environmental Hygiene Department, following the commencement of the first stage for about 250 public toilets, the remaining projects for about 430 public toilets will be rolled out progressively from 2024 to 2028. (EEB)

- Carry out landscaping works at suitable LCSD venues and roadsides by planting of flowering trees and colourful shrubs as well as develop Shing Mun River and Yuen Long Nullah as hot spots for flower viewing to beautify cityscape. (CSTB)
- Identify suitable pitches/courts, external walls and toilets at LCSD venues for injecting art and design elements to make the venues more appealing aesthetically. (CSTB)
- Continue to take forward several new public market projects which are at different planning stages, among which the new markets at Tin Shui Wai and Tseung Kwan O are expected to be commissioned first in 2027 and 2028 respectively. (EEB)
- Continue to take forward the Market Modernisation Programme, including the overhaul of Lai Wan Market and Ngau Tak Kok Market, and the proposed overhaul of Causeway Bay Market. (EEB)
- Continue to extend the promenades on both sides of the Victoria Harbour to 27 kilometres by end-2023 and further to 34 kilometres in 2028. (DEVB)
- Introduce a bill to amend the Protection of the Harbour Ordinance within 2024, with a view to facilitating harbour enhancement works to enhance public enjoyment and connectivity of the harbourfront and strengthen the harbour functions. (DEVB)
- Continue to enhance existing country park facilities and further explore providing new ones, such as treetop adventures and open museums, to enrich visitors' experience and enjoyment. (EEB)
- Commence works of the 60-kilometre "Round-the-Island Trail" on Hong Kong Island progressively from 2023 onward, with a view to connecting 90% of the trail by end-2027 and substantially completing the remaining larger scale works by end-2031. (DEVB)
- Implement about ten proposals in 2024 and 2025 to improve the pedestrian environment and traffic conditions in Wong Chuk Hang, Aberdeen Waterfront and Ap Lei Chau North in the short term. (DEVB)
- Open the hiking trail connecting Yip Hing Street and Aberdeen Country Park under the Green Link in Wong Chuk Hang in early 2024, commence works on a boardwalk along Staunton Creek Nullah in the first quarter of 2024, and commence design on the proposals to enhance the waterfront from Tin Wan to Sham Wan within 2024 for commencing works in 2025. (DEVB)
- Study possible options within 2024 for consolidating the existing bus depot facilities in Wong Chuk Hang with a view to unleashing the development potential of the temporary sites concerned. (DEVB, TLB)
- Draw up a master layout plan for the project on Redevelopment and Enhancement of Recreation and Sports Facilities in Wong Chuk Hang and conduct related detailed technical assessments within 2024 to promote "single site, multiple use". (CSTB, DEVB)
- Study the feasibility of building a museum near Ocean Park to enrich cultural infrastructure and create synergies with the future development in the Southern District. (CSTB, DEVB)
- Explore providing a pier at Repulse Bay to link up with other destinations in the Southern District. (DEVB)
- Continue with the investigation and design study on the expansion of Aberdeen Typhoon Shelter, and conduct public consultation within 2024 before commencing works in early 2025. (DEVB)
- Continue with the investigation and design studies for the Deep Water Bay and Tai Shue Wan pier projects with a view to conducting public consultation within 2024 and commencing works in 2025. (CSTB)

- Consult stakeholders on the conceptual proposal for the revitalisation of Aberdeen Wholesale Fish Market by end-2023, and plan to complete a technical feasibility study by end-2024. (EEB, DEVB)
- Continue to implement the cycle track between Tuen Mun and Tsuen Wan by commencing the construction of the section from Tuen Mun to So Kwun Wat and the detailed design of the section from So Kwun Wat to Ting Kau within 2024, and continuing with the detailed design of the section between Ting Kau and Bayview Garden in Tsuen Wan. (DEVB)
- Commence the investigation study and design of the second stage of the Tseung Kwan O Desalination Plant within 2024 to enhance the resilience of fresh water supply for ensuring the sustainable development of Hong Kong. (DEVB)

Enhancing food safety

- Complete the legislative amendment exercise to update the food safety standards for preservatives and antioxidants in food within 2024. (EEB)
- Review the food safety standards for sweeteners in food in 2024 and conduct public consultation in 2024-25. (EEB)

Building more columbaria

- Continue to build more public columbaria. The project at Shek Mun, which is expected to be completed by 2025, and together with the projects under planning at Siu Ho Wan, Kwai Chung and Wo Hop Shek will provide a total of about 420 000 niches. (EEB)

Enhancing animal welfare

- Press ahead with legislative amendments and other measures for imposing the duty of care on persons responsible for animals and further protecting animals from unnecessary suffering. (EEB)